

3M DI-NOC™ Architectural Finishes

Color Samples

Premium Wood
Stucco
Suède
Solid Color
Wood Grain

Dry Wood
Terracotta
Leather
Smooth Metal
Metal

Mortar
Ceramic
Fabric
Metallic Wood
Concrete

Plaster
Textile
Metallic Palette
Chipboard
Tile

Stone
Oxidized Metal
Plaster on Metal
Fine Wood
Abstract

Functional Products

Abrasion Resistant

Whiteboard Film

Exterior

Glass Finishes



Functional Products



ME-433AR

HCS

Fulfillment

MS

MW K&G

Design

- Fulfillment
- Two
- You
- G

- MARKET LEADER
- INNOVATION
- Buildwell Be Well



2012

2011

WH-111



Superior Abrasion Resistance

3M™ DI-NOC™ Architectural Finishes Abrasion Resistant AR Series are decorative surface finishes for interior applications in high-traffic areas. The abrasion resistant top layer reduces the visibility of scratches.

+10 New Patterns

Including designs unique for the AR series and expansion of Metallic series.



ME-2293AR



Transform Surfaces into Communication Spaces

3M™ DI-NOC™ Whiteboard Film is a unique architectural finish that can convert interior surfaces into creative and collaborative environments. Compatible with most dry erase markers.

Writing

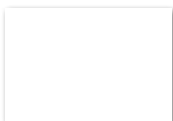
WH-111 offers excellent writing and erasing performance with a glossy surface.



WH-111

Writing and Projection

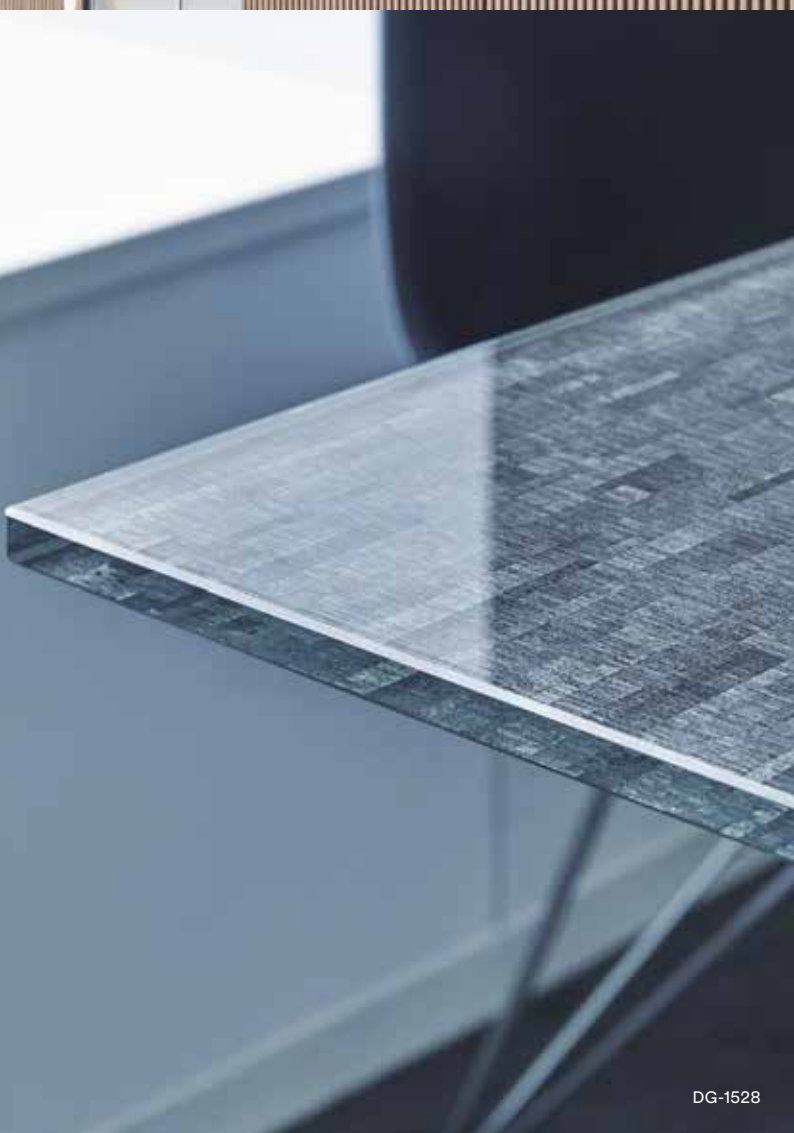
PWF-500 provides both whiteboard and projection capabilities, with the matte surface providing minimal glare from a projector.



PWF-500



FW-1122EX



DG-1528



Weather Resistant Surface Finish for Exterior Applications

3M™ DI-NOC™ EX Series for exteriors are durable, dimensionally stable, and weather resistant surface finishes for exterior applications. They can be applied directly on smooth, non-porous application surfaces. It is designed to maintain consistent finish and color, despite UV exposure and other conditions.

Coordinate Exterior and Interior Designs

Create a sense of unity between interior and exterior surfaces by using DI-NOC™ Standard Series and DI-NOC™ EX Series with the same design.



Excellent Weather Resistance

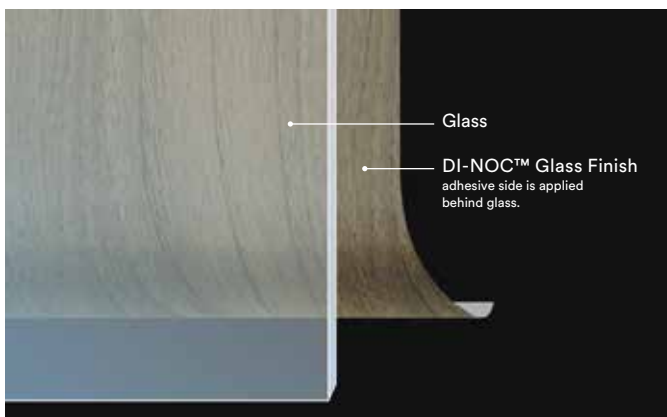
Exterior warranty ranges from 3 to 14 years, depending on the climate and installation location. Contact 3M Technical Support for detailed warranty information.



3M™ DI-NOC™ Glass Finishes can be used behind many glass surfaces and provide an opaque dimensional look when viewed from the front glass surface. The current Product line can be found in the 3M™ Glass Finishes Product Catalog.

+4 New Patterns

You can make a glass decorated with unique designs by applying DI-NOC™ Glass Finishes.





3M™ DI-NOC™

Architectural Finishes

2023

Design Description Guide



- ① — WG-960
- ② —  — ②
- ③ —  WG-960EX




WG-960EX

Series | Number | Suffix for functional series




- ① Standard series description
- ② Supplementary information icon
- ③ Functional series icon and design description

Standard and functional series have a similar appearance but are not identical.

Supplementary Information Icon List

- NEW** New design
- H** Horizontal woodgrain
- MT** Matte design
-  See full scale design on website
-  Not recommended for use on 3D compound curved surfaces
-  Manufactured to order item

Functional Series Icon List

-  **EX Series :**
for exterior applications
-  **AR Series :**
for high traffic applications
-  **DG Series :**
for applications behind glass

WHAT IS A MASTERPIECE?

A masterpiece improves the lives of all who experience it. They are the objects of beauty inspired by nature and materials at hand — wood, textile, stone, leather, metal — and are limited only by the imagination of the master. 3M™ DI-NOC™ Architectural Finishes bring you the beauty of hundreds of natural elements with the additional new designs, Premium Wood, Metallic Palette and Artisanal Design, to inspire your masterpiece. We use advancements in science so you can capture the worlds natural beauty without sacrificing a forest or your creative ideals. You can create a stunning new space quickly, easily, and sustainably or breathe new life into an existing space almost overnight. The non-porous surface of DI-NOC™ Architectural Finishes is not just beautiful but easy to clean and disinfect. There are no boundaries. No limits. Only your imagination. Create your masterpiece.



Contents

Matte :

Premium Wood	8
Dry Wood	10
Mortar / Plaster	14
Plaster on Metal	16
Stone	16
Stucco / Terracotta / Ceramic	17
Textile	18
Fabric	18
Suede / Leather	19
Oxidized Metal	19
Metallic Palette	20
Smooth Metal	20
Solid Color	21

Basic :

Metallic Wood	23
Chipboard	23
Fine Wood	24
Wood Grain	32
Wood Grain Gloss	34
Metal	38
Stone / Concrete / Tile	42
Textile	44
Leather	45
Abstract	46
Solid Color	48
Abrasion Resistant	50
Exterior	51







Do more with your designs

- 1 PS-504
- 2 ME-1781AR
- 3 AE-1632 / FW-1212 / PS-713
- 4 PS-1187
- 5 DW-1888MT / PS-503
- 6 Custom design of EX series
- 7 DW-1888MT
- 8 PS-504 / PA-045AR
- 9 PS-1870MT / PWF-500
- 10 FW-336 / PS-1869MT (PS-3869MT)



Matte Series



GOOD
DESIGN
AWARD
2019

- 1 PW-2315MT NEW
- 2 ST-2171MT NEW
- 3 ME-2262 NEW
- 4 ST-1831DG
- 5 ME-2265 NEW
- 6 AE-2152MT NEW

1

2

3

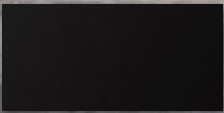
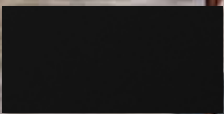
Matte Coating Technology :

The new Matte Series utilizes the latest technology available. With a new state of the art matte surface, the Matte Series offers realistic texture by converting incident light into diffuse reflection and suppressing specular reflection. This series also provides fingerprint resistance. Explore the new world of design possibilities with 3M Matte Series.

Experience the difference in texture between standard series and new Matte Series

Matte Series
PS-1870MT

Standard Series
PS-999





5

6



Diffuse Reflection

The new state of the art matte surface converts incident light into diffuse reflection, providing very low gloss and a deep, high quality matte texture.



Fingerprint Resistant

The matte texture provides fingerprint resistance, reducing the visibility of fingerprints with an easy to maintain surface.



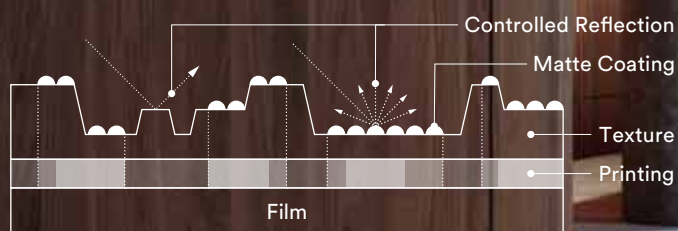
Tactile Feature

A realistic matte texture is created by combining the matte coating technology with high definition embossing technology.

Premium Wood

Controlled Reflection Technology

The new Premium Wood Series expresses the realistic appearance and texture of natural wood. The controlled reflection of the matte coating technology is combined with both fine and deep wood grain embossing and high-quality printing. This unique technology creates the optimum tone and texture of each species of wood.



PW-2314MT

NEW

1 PW-2315MT NEW 2 ST-2171MT NEW



PW-2305MT

NEW



PW-2306MT

NEW



PW-2310MT

NEW



PW-2307MT

NEW



PW-2309MT

NEW



PW-2312MT

NEW



PW-2313MT

NEW



PW-2308MT

NEW



PW-2311MT

NEW



PW-2315MT

NEW



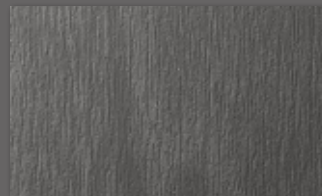
PW-2316MT

NEW



PW-2317MT

NEW



PW-2318MT

NEW



PW-2319MT

NEW

A

B

C

D

E

F

G

Dry Wood

A



DW-2197MT



DW-2199MT



DW-2200MT



B

C



DW-1903MT



DW-1894MT



DW-1888MT



DW-1875MT



D



DW-2198MT



DW-2201MT



DW-2202MT



DW-1902MT



E



DW-1993MT



F



DW-2203MT



DW-2205MT



DW-2204MT



G



DW-2206MT



DW-1889MT





DW-1883MT



DW-1901MT



DW-2207MT



DW-2209MT



DW-1878MT



DW-1873MT



DW-1876MT



DW-2208MT



DW-1897MT



DW-2210MT



DW-1877MT



DW-2212MT



DW-1874MT



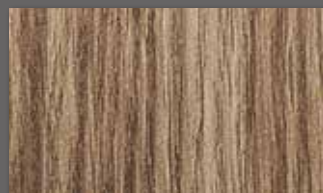
DW-2224MT



DW-1890MT



DW-1891MT



DW-1884MT



DW-2211MT



A

B

C

D

E

F

G

Dry Wood

A



DW-2218MT



DW-1872MT



DW-2219MT



B



DW-1893MT



DW-1872MT



DW-2219MT



C



DW-1898MT



DW-2223MT



DW-2226MT



DW-2225MT



D



DW-1898MT



DW-2223MT



DW-2226MT



DW-2225MT



E



DW-2221MT



DW-2220MT



DW-2222MT



F



DW-2221MT



DW-2220MT



DW-2222MT



G



DW-1881MT



DW-1886MT



DW-1871MT



DW-2227MT





DW-1882MT



DW-1879MT



DW-2214MT



DW-1899MT



DW-2213MT



DW-2217MT



DW-1885MT



DW-1900HMT



DW-2216MT



DW-2215MT



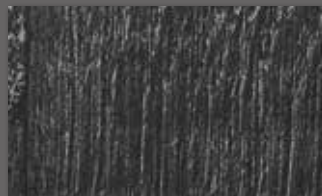
DW-1887MT



DW-2228MT



DW-1992MT



DW-1896MT



DW-2229MT



A

B

C

D

E

F

G



1

2

3

2

Mortar / Plaster



AE-2149

NEW



AE-2150

NEW

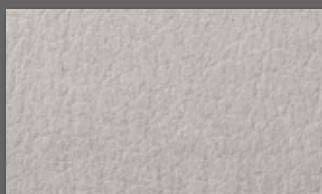


AE-2160

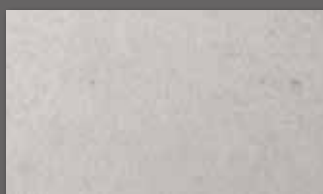
NEW



AE-1880MT



AE-1959MT



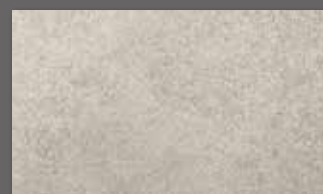
AE-1917MT



AE-1923MT



AE-1913MT



AE-2161

NEW



AE-2162MT

NEW



AE-2151

NEW



AE-2152MT

NEW



AE-1930MT



AE-2153MT

NEW



AE-1921MT



AE-1960MT



AE-1944MT

A

B

C

D

E

F

G

Plaster on Metal

A



FE-1964



AE-2154

NEW



AE-2155

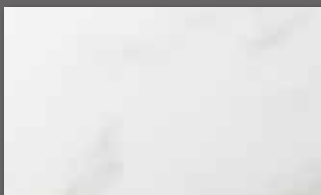
NEW

B

C

Stone

D



ST-1914MT



ST-1919MT



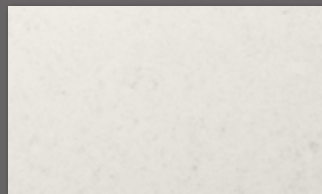
ST-2171MT

NEW

E



ST-1918MT



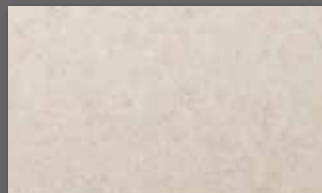
ST-1911MT

F



ST-2170MT

NEW



ST-1915MT

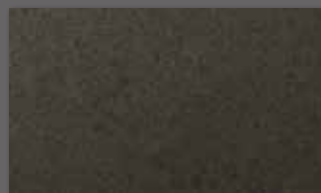


ST-1912MT

G



ST-1927MT



ST-1916MT



ST-1920MT



Stucco / Terracotta / Ceramic



AE-2156

NEW



AE-1637

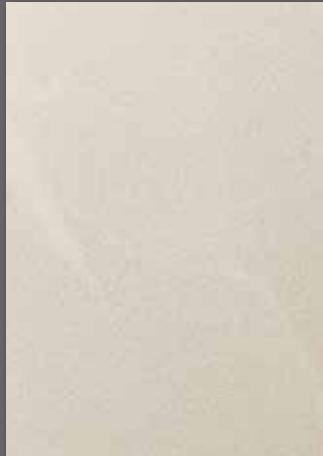


AE-1638



AE-2158

NEW



AE-2157

NEW



AE-2163MT

NEW



AE-1717



AE-1639



AE-2164MT

NEW



AE-2165MT

NEW



AE-1926MT



AE-1718



AE-1929MT



AE-2159

NEW



AE-1719

AE-1719DG



AE-1640



AE-2167MT

NEW

A

B

C

D

E

F

G

Textile

A



NU-2177

NEW 



FE-1966



NU-2178

NEW 



NU-2176MT

NEW

B



NU-2175MT

NEW

C



NU-2179

NEW 



FE-1967

D

Fabric

E



NU-1942MT



NU-1941MT



NU-1940MT



NU-1935MT

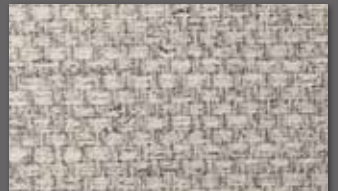
F



NU-1934MT



NU-1943MT

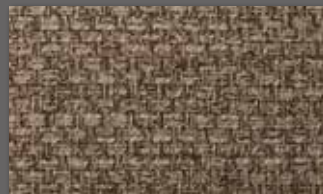


NU-1937MT

G



NU-1938MT



NU-1936MT



NU-1939MT

Suede / Leather



SU-2233MT



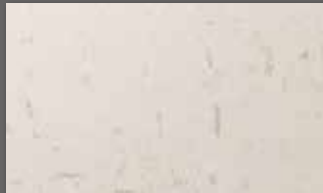
SU-2231MT



SU-2234MT



SU-2235MT



AE-1931MT



SU-2232MT



AE-1932MT



AE-1933MT



Oxidized Metal



ME-2172



ME-2173



AE-1954



ME-2024



ME-2022



ME-2023



ME-2174



Metallic Palette

A



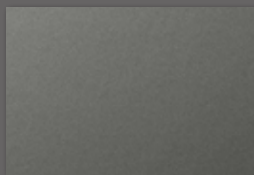
ME-2251MT NEW



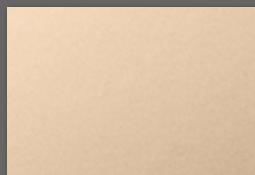
ME-2252MT NEW



ME-2253MT NEW



ME-2254MT NEW



ME-2255MT NEW

B



ME-2261 NEW



ME-2262 NEW



ME-2263 NEW



ME-2264 NEW



ME-2265 NEW

C



ME-2271 NEW



ME-2272 NEW



ME-2273 NEW

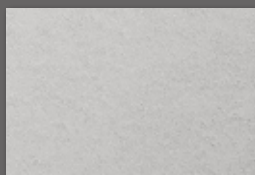


ME-2274 NEW

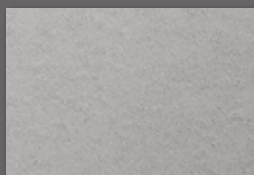


ME-2275 NEW

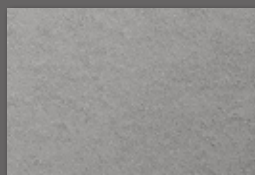
D



ME-2281AR NEW



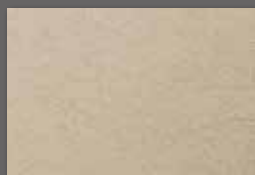
ME-2282AR NEW



ME-2283AR NEW



ME-2284AR NEW



ME-2285AR NEW

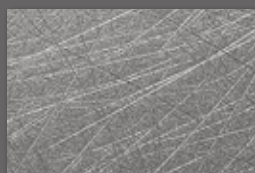
E



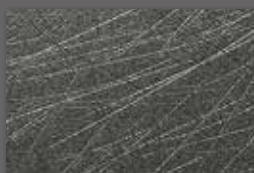
ME-2291AR NEW



ME-2292AR NEW



ME-2293AR NEW



ME-2294AR NEW

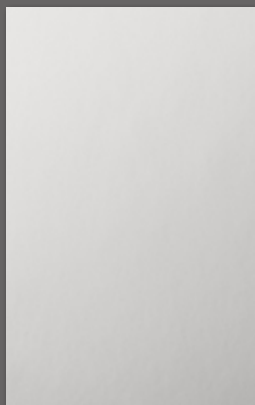


ME-2295AR NEW

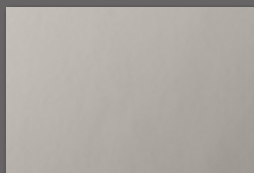
F

Smooth Metal

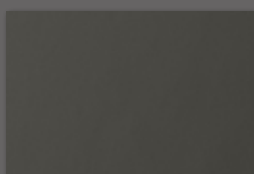
G



VM-1855MT



VM-1990MT



VM-1862MT



ME-2251MT NEW



Solid Color



PS-3094MT/PS-3101MT/PS-3100MT/PS-3099MT/PS-3093MT/PS-3092MT/PS-3989MT/PS-3095MT/PS-3098MT/PS-3096MT/PS-3097MT



1

2

Metallic Wood



MW-1416



MW-1242



MW-1833



MW-1832



MW-1418



MW-1244



MW-1417



MW-1834



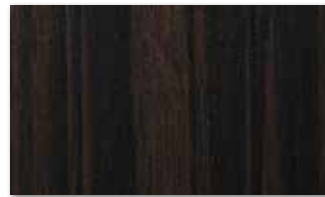
MW-1783



MW-1177



MW-1419
 MW-1419DG



MW-776



MW-777



Chipboard



AE-2168

NEW



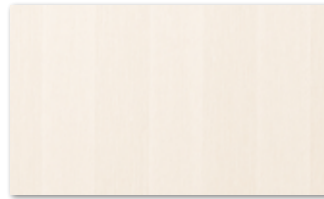
AE-2168 NEW

Fine Wood

A



FW-1761



FW-1758



FW-1683



FW-1765

B



FW-1209



FW-788



FW-1261

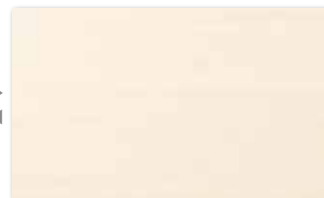
C



FW-7017
FW-7017AR



FW-1138
FW-1138AR



FW-1139H



FW-336

D



FW-1208



FW-7001



FW-1980

E



FW-1255



FW-1207

F



FW-1207 / ME-1434



FW-1271



FW-1217

G



FW-1210

NEW New design
H Horizontal woodgrain
MT Matte design

See full scale design on website
Not recommended for use on 3D compound curved surfaces

EX series: for exterior applications
AR series: for high traffic applications
DG series: for applications behind glass

This product is manufactured to order. Contact your local 3M sales rep to learn more on its lead time and minimum order quantity



FW-1981



FW-1745



FW-1211



FW-789



FW-1214
FW-1214EX



FW-1291



FW-1766



FW-1258



FW-1129
FW-1129AR
FW-1129DG



FW-1130H
FW-1130HAR



FW-1256



FW-1988



FW-1750



FW-1285



FW-1289



FW-1293
FW-1293AR



FW-1279



FW-1972



FW-1681



FW-1269



FW-1810



FW-1272



FW-1262

A

B

C

D

E

F

G

Fine Wood

A



FW-1974



FW-1304



FW-1307



B



FW-1987



FW-1754



FW-1976



FW-1978



C



FW-1767



FW-1302



FW-1287



FW-1971



D



FW-1266



FW-1213



FW-1215



FW-1294
FW-1294AR



E



FW-1259



FW-337
FW-337AR



FW-1977



FW-1273



F



FW-1983



FW-1218



FW-1770



G

NEW New design
H Horizontal woodgrain
MT Matte design

📷 See full scale design on website
⚠️ Not recommended for use on 3D compound curved surfaces

🏠 EX series: for exterior applications
🏢 AR series: for high traffic applications

📅 This product is manufactured to order. Contact your local 3M sales rep to learn more on its lead time and minimum order quantity



FW-1265



FW-1212



FW-1257



FW-236



🏠 FW-236AR 🏢 FW-236EX



FW-1122



🏠 FW-1122AR 🏢 FW-1122EX



FW-1023



🏠 FW-1023EX



FW-1286



FW-1296



FW-1805



🏠 FW-1805EX



FW-1771H



FW-1306



FW-1755



FW-1734H



FW-1278



FW-502



FW-1021



FW-1735H



FW-7011



🏠 FW-7011AR 🏢 FW-7011EX



FW-1763



FW-656



A

B

C

D

E

F

G

Fine Wood

A



FW-327



FW-1283



FW-237



FW-1743



B



FW-234



FW-1123
FW-1123EX



FW-608H



C



FW-1737



FW-1276



FW-795



FW-1331



D



FW-1737



FW-501



FW-1280
FW-1280AR



FW-1125



E



FW-612



FW-655



FW-1738



FW-677



F



FW-888



G



FW-1281



FW-233
FW-233AR FW-233EX



FW-889



FW-7006
FW-7006EX





FW-7008
 FW-7008EX



FW-1022
 FW-1022AR FW-1022EX
 FW-1022DG



FW-1121H
 FW-1121HAR



FW-1113
 FW-1113EX



FW-613



FW-609H
 FW-609HEX



FW-650
 FW-650EX



FW-1277



FW-1744



FW-1801
 FW-1801EX



FW-232



FW-1124
 FW-1124EX



FW-1039H



FW-332



FW-886



FW-510



FW-1137



FW-1040H



FW-240



FW-7016



FW-1020



FW-7013



FW-619



FW-887
 FW-887EX

A

B

C

D

E

F

G

Fine Wood

A



FW-1134



FW-606H



FW-625

FW-625AR FW-625EX



FW-7015



B



FW-1297



FW-651

FW-651EX



FW-1282



FW-1037



C



FW-338

FW-338AR



FW-7009



FW-1133



FW-607H



D



FW-653



FW-643

FW-643EX



FW-7014



FW-330

FW-330AR FW-330EX



E



FW-1135



FW-1136H



FW-1036



FW-1752H



F



FW-1746



FW-334



FW-522

FW-522EX



FW-1752H



G



FW-1126



FW-627

FW-627AR FW-627EX



FW-1288



FW-618

FW-618EX



NEW New design
H Horizontal woodgrain
MT Matte design

📷 See full scale design on website
⚠️ Not recommended for use on 3D compound curved surfaces

🏠 EX series: for exterior applications
🚧 AR series: for high traffic applications
🔧 DG series: for applications behind glass

📦 This product is manufactured to order. Contact your local 3M sales rep to learn more on its lead time and minimum order quantity



FW-1736H



FW-1216



FW-7007



FW-1986



FW-1275



FW-1301



FW-1290



FW-1975



FW-324



🏠 FW-324EX



FW-640

🏠 FW-640EX



FW-1753H



FW-1127



FW-1762



FW-1751

🚧 FW-1751AR 🔧 FW-1751DG



FW-641



FW-1984



FW-1979



FW-1970



FW-1985



FW-1757



FW-1740



FW-1757



A

B

C

D

E

F

G

Wood Grain

A



WG-657
WG-657EX



WG-1365



WG-2078



WG-1067



WG-1071

B



WG-1709



WG-1846



WG-247



WG-1046



WG-1339

C



WG-1343



WG-2049



WG-1705



WG-2076



WG-467

D



WG-1344



WG-2083H



WG-376



WG-1220



WG-2070

E



WG-1340



WG-1378



WG-960
WG-960EX



WG-2073



WG-964

F



WG-1838



WG-1141



WG-166



WG-2085



WG-2860

G



WG-1143
WG-1143EX



WG-2705



WG-1392H



WG-1710



WG-696

H



WG-1840



WG-1144
WG-1144EX



WG-1837



WG-1337



WG-947

NEW New design
H Horizontal woodgrain
MT Matte design

See full scale design on website
Not recommended for use on
3D compound curved surfaces

EX series: for exterior applications
This product is manufactured to order. Contact your local 3M sales rep
to learn more on its lead time and minimum order quantity



WG-248



WG-946



WG-1812



WG-833



WG-832



WG-478



WG-1219



WG-837



WG-1221



WG-2246



WG-835



WG-453



WG-256



WG-2944



WG-1380



WG-243



WG-2839



WG-250



WG-2081H



WG-1814



WG-1346



WG-877



WG-2244



WG-845



WG-846



WG-1845



WG-699



WG-1358



WG-1815



WG-2115



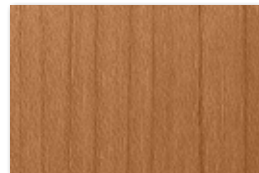
WG-857



WG-242



WG-1382



WG-836



WG-1058



WG-831



WG-709



WG-629



WG-878



WG-854



Wood Grain

A



WG-2071



WG-1360



WG-2080H



WG-1142



WG-1140
WG-1140EX



B



WG-763



WG-865



WG-943



WG-941



WG-697



C



WG-841



WG-1359



WG-1375



WG-694



WG-7022



D



WG-879



WG-2862



WG-364



WG-940



WG-417

E

Wood Grain Gloss

F



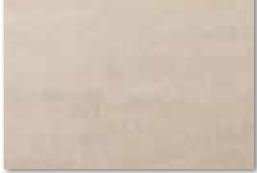
WG-1711GN



WG-763GN



G



WG-1712GN



WG-765GN



H



WG-1712GN



WG-364GN



WG-763GN

Wood Grain



WG-1703



WG-1353



WG-2086



WG-2088



WG-2072



WG-1336



WG-1336



WG-2082H



WG-1342



WG-2074



WG-2087



WG-2075



WG-1368



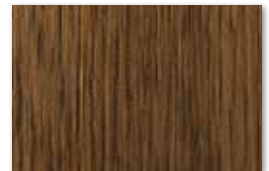
WG-1848



WG-1708



WG-1196



WG-695

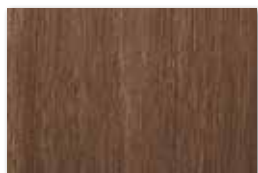
WG-695EX



WG-2042



WG-1706



WG-1369



WG-2084H



WG-1370



WG-1348



WG-157



WG-1371



WG-1349



WG-1372

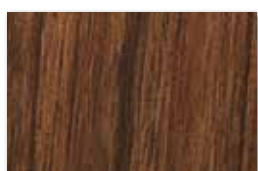
WG-1372AR



WG-1057



WG-2019



WG-1841



WG-2033



WG-1704



Wood Grain

A



WG-1146



WG-1064



WG-7024



WG-7024AR WG-7024EX



WG-7023



WG-1390



B



WG-1816



WG-693



WG-1147



WG-159



WG-7029



C



WG-1836



WG-1350



WG-2048



WG-1373



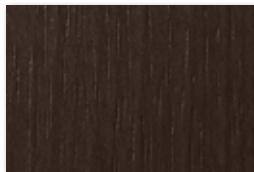
WG-1066



D



WG-1818



WG-1364



WG-1063



WG-664



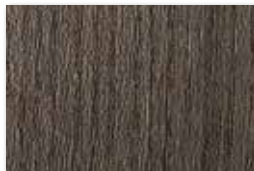
WG-156



E



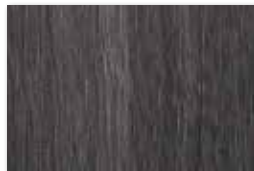
WG-2077



WG-1044



WG-1044EX



WG-1374



WG-1351



WG-1052



F



WG-1376



WG-1376



WG-1391



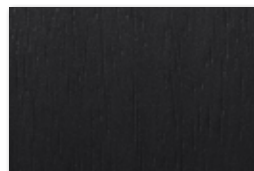
WG-2707



G



WG-1070



WG-2041



WG-1835



H



WG-2047



WG-1050



WG-428



4

2

1

2

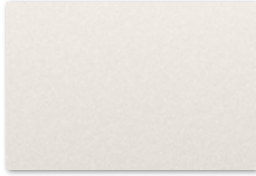
3

Metal

A



ME-1466
 ME-1466AR



ME-1467
 ME-1467AR



CH-2117



CH-1627



BW-1310

B



ME-1716
 ME-1716DG



ME-433
 ME-433AR



CH-1677

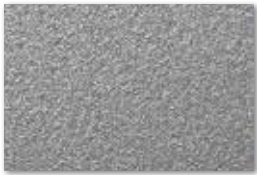


AM-1722



VM-1691

C



ME-432
 ME-432AR ME-432DG



BW-1311



CH-2120



ME-904
 ME-904AR



ME-377

D



ME-1435



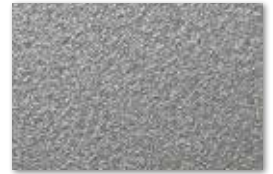
CH-1676



PA-184

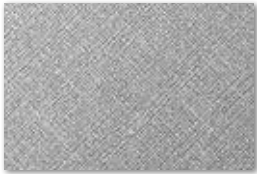


ME-388

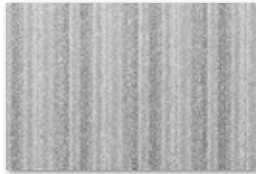


PA-045
 PA-045AR

E



CH-1628
 CH-1628AR



LW-1085



ME-1434
 ME-1434DG



CH-2116



ME-396
 ME-396AR

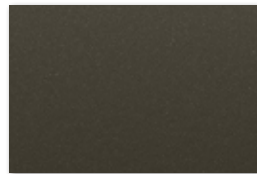
F



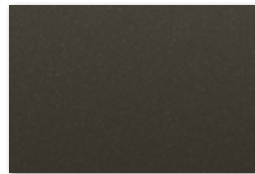
ME-391



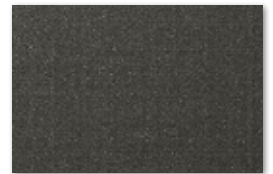
ME-1781
 ME-1781AR



PA-185



PA-389
 PA-389AR PA-389EX



CH-2118

G



ME-431
 ME-431AR



CH-1630
 CH-1630AR



AM-1700



VM-2122



VM-1489

H



ME-379
 ME-379DG



ME-1684
 ME-1684AR



ME-1685
 ME-1685AR



VM-800



CH-1631
 CH-1631AR

NEW New design
 H Horizontal woodgrain
 MT Matte design

📷 See full scale design on website
 ⓘ Not recommended for use on 3D compound curved surfaces

🏠 EX series: for exterior applications
 🚧 AR series: for high traffic applications
 🚧 DG series: for applications behind glass

📄 This product is manufactured to order. Contact your local 3M sales rep to learn more on its lead time and minimum order quantity



PA-180
 🚧 PA-180AR 🚧 PA-180DG



CH-1629
 🚧 CH-1629AR



PA-046



BW-1312 ⓘ



LW-1084 ⓘ



VM-306 ⓘ



VM-383 ⓘ



AM-1696 ⓘ



ME-1223



PA-039
 🚧 PA-039EX



ME-1997



VM-1692 📷 ⓘ



PA-683
 🚧 PA-683AR



ME-486



AM-1701 ⓘ



VM-381 ⓘ



VM-1487 ⓘ



VM-2121 ⓘ



VM-305 ⓘ



ME-1225



PA-038
 🚧 PA-038EX



PA-320



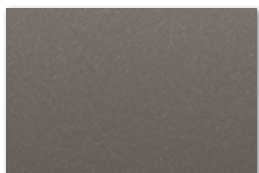
VM-1693 ⓘ



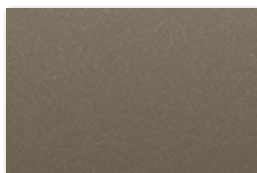
ME-1224



ME-380



PA-187
 🚧 PA-187AR 🚧 PA-187EX



PA-183
 🚧 PA-183AR



VM-1695 ⓘ



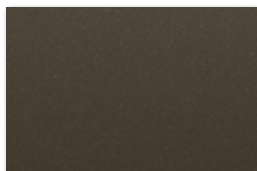
VM-1694 ⓘ



ME-1174



PA-390
 🚧 PA-390EX



PA-181
 🚧 PA-181AR 🚧 PA-181EX



LW-1083



AM-1699 ⓘ



VM-1488 ⓘ

A

B

C

D

E

F

G

H

Metal

A



VM-168



PA-175



ET-1773



ET-1775



ET-1772

B



PA-178



PA-177



PA-036



ME-1175

C



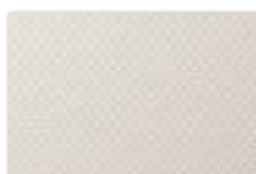
FA-1963



CA-419



BW-1315



TE-1714



RS-1190



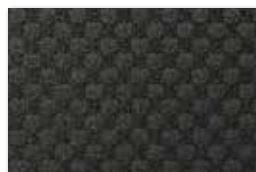
D



TE-1650



CA-422



TE-1652



FA-1161

FA-1161DG

E



CA-418



TE-1651



TE-1713



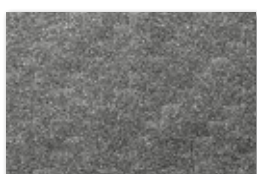
HG-1995



BW-1316



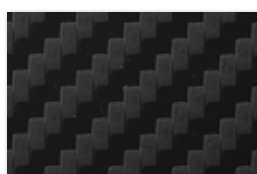
F



CA-420



RS-1189



CA-421



TE-1653



CA-1170

G

H

NEW New design
H Horizontal woodgrain
MT Matte design

See full scale design on website
 Not recommended for use on 3D compound curved surfaces

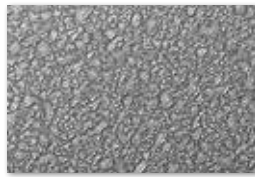
DG series: for applications behind glass
 This product is manufactured to order. Contact your local 3M sales rep to learn more on its lead time and minimum order quantity



ME-2026



ME-1961



AM-1720



VM-2090



FA-1166



AE-1957



ME-2025



VM-452



VM-2035



AM-1698



ME-2020



AE-1643



FA-1164



VM-2038



VM-2037



ME-1778



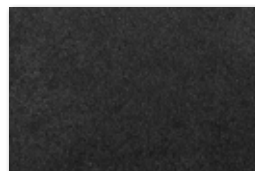
FA-1163



ME-1469



RT-1111



RT-1827



AE-1952



VM-2039



ME-2027



AE-1956



VM-2036



Stone / Concrete / Tile

A



ST-1831
 ST-1831DG



FA-1678
 FA-1678AR FA-1678DG



AE-1632
 AE-1632AR AE-1632EX

B

C



AE-1634
 AE-1634EX



ST-1828



ST-1588



CN-1623

D



FA-1527
 FA-1527AR



PC-1181

E



CN-1958



FA-1680



PC-758



CN-1621



CN-1622

F

G



PC-760



AE-1635
 AE-1635EX



FA-1962



FA-1528
 FA-1528DG

H



ST-1586

NEW New design
H Horizontal woodgrain
MT Matte design

See full scale design on website
Not recommended for use on 3D compound curved surfaces

EX series: for exterior applications
This product is manufactured to order. Contact your local 3M sales rep to learn more on its lead time and minimum order quantity



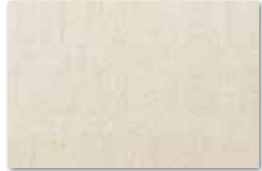
AE-1955



ST-736
ST-736AR ST-736EX



PC-672



FA-1679



ST-737



ST-1195



FA-1526
FA-1526AR



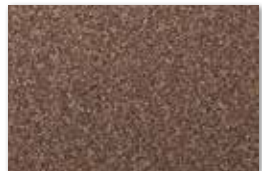
ST-1829



PC-491



FA-2169 NEW



PC-1179



PC-1178



FA-2169



FA-592



ST-1587
ST-1587DG



AE-1645



FA-1530
FA-1530AR FA-1530EX



AE-1636
AE-1636AR



FA-1531



AE-1633
AE-1633AR



ST-442
ST-442EX



AE-1951



AE-1646



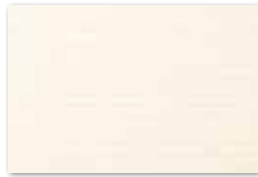
ST-1830

Textile

A



NU-2012



NU-1237



NU-1784



B



FE-804



SI-1686



NU-2014

C



NU-1798



FE-805



FE-813



NU-1785



NU-1794



D



NU-1795



NU-2013



FE-813



NU-1785



NU-1238



E



NU-1790



NU-1793



NU-2015



NU-1239



FE-801



F



NU-1791



NU-1792



NU-1240



NU-2010

G



NU-1786

NU-1786DG



NU-1789



SI-1613

SI-1613DG



NU-2017

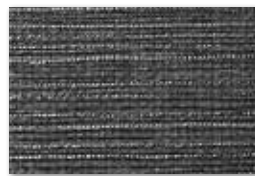


NU-2009

H



NU-1799



NU-1787



NU-1241



NEW New design
 H Horizontal woodgrain
 MT Matte design

See full scale design on website
 Not recommended for use on 3D compound curved surfaces

EX series: for exterior applications
 DG series: for applications behind glass

This product is manufactured to order. Contact your local 3M sales rep to learn more on its lead time and minimum order quantity



SI-1234



NU-2002



NU-2006



SI-1232



NU-2011



NU-2003



SI-1689
 SI-1689DG



SI-1688



NU-2005



NU-2008



NU-2004



FA-1156
 FA-1156DG



NU-2007



SI-1235



NU-2001

Leather



LE-1105



LE-1552



LE-018



LE-2128



LE-2367



LE-2741



LE-2782



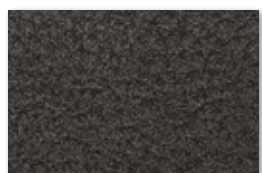
LE-517



LE-1555



LE-1106



LE-703
 LE-703EX



LE-783



LE-1104



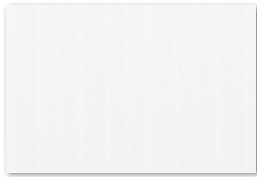
LE-1171



LE-1551

Abstract

A



LW-1081



AE-1953

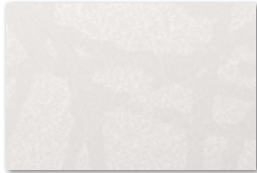


LZ-461



FA-1153

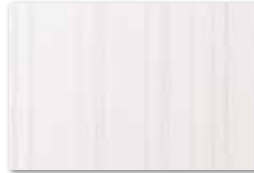
B



HS-1655



AE-1953

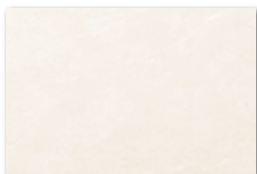


FA-1150



FA-1153

C



FE-1731



FA-1167



PT-735



FA-1099

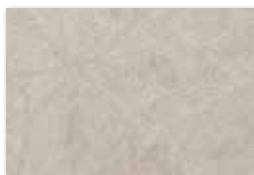


SE-567
SE-567AR

D



FA-1521



PT-346



SE-570



PG-197



LZ-462

E



FA-1098



PT-347



PT-345
PT-345AR



PG-195



PG-190

F



LZ-587



SE-568
SE-568AR



PG-194



LE-1229



PG-189

G



AE-1642



FA-690



FE-1729



FA-688



FE-1730

H



BW-1314



AE-1641



LE-1228



LE-1231



HS-1656



1

1

2

3

Solid Color

A



HG-1205



PS-3904MT
(PS-1904MT)

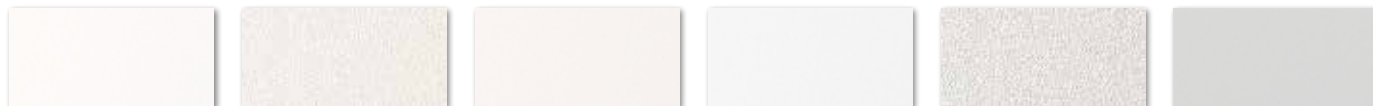
PS-503
☑ PS-503DG

PS-959
☑ PS-959EX

PS-1188

PS-3989MT
(PS-1989MT)

B



☑ PS-001AR

PS-1187

☑ PS-003AR

☑ PS-002AR

PS-957
☑ PS-957EX

PS-3865MT
(PS-1865MT)

C



PS-976
☑ PS-976EX

PS-983

PS-998

PS-975

HG-1994

PS-955

D



PS-1186

PS-1185

☑ PS-004AR

PS-1437

☑ PS-005AR

PS-954

E



PS-090
☑ PS-090EX

PS-3864MT
(PS-1864MT)

PS-1184

PS-1438

PS-3091MT
(PS-2091MT)

PS-952

F



PS-048

PS-073

PS-091

PS-971

PS-3866MT
(PS-1866MT)

PS-3092MT
(PS-2092MT)

G



PS-075

PS-093

PS-3863MT
(PS-1863MT)

PS-3099MT
(PS-2099MT)

PS-949

PS-3093MT
(PS-2093MT)

H



PS-027

PS-022

PS-3095MT
(PS-2095MT)

PS-950

PS-3100MT
(PS-2100MT)

PS-3869MT
(PS-1869MT)

I



PS-3098MT
(PS-2098MT)

PS-034

PS-3096MT
(PS-2096MT)

☑ PS-006AR

PS-992

PS-885

J



PS-074

PS-292

PS-1005

PS-1439

PS-948

PS-504
☑ PS-504DG

K



PS-3867MT
(PS-1867MT)

PS-110

PS-3101MT
(PS-2101MT)

PS-3094MT
(PS-2094MT)

PS-1183

PS-1870MT

L



PS-3097MT
(PS-2097MT)

PS-1440

☑ PS-007AR

PS-999

☑ PS-008AR

HG-1201





PS-042

PS-031

PS-1441

PS-1436

PS-982



PS-096

PS-719

PS-1448

PS-1452

PS-112



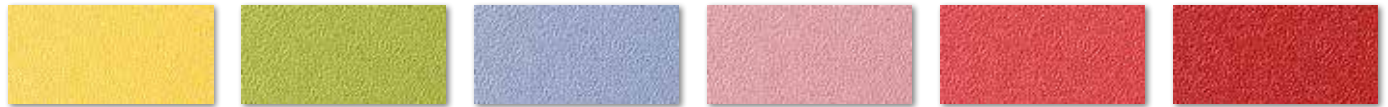
PS-1442

PS-116

PS-713

PS-281

PS-1820



PS-1443

PS-1446

PS-1450

PS-1454

PS-1459

PS-910



PS-912

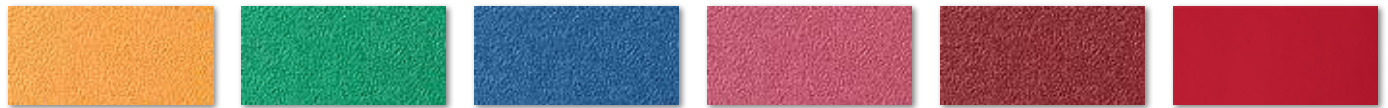
PS-1010

PS-920

PS-121

HG-1996

PS-1008



PS-1444

PS-135

PS-506

PS-1455

PS-900

HG-1511



PS-134

PS-914

PS-140

PS-2060

PS-1009

PS-151



PS-141

PS-665

PS-668

PS-1823

PS-107



PS-1821

PS-139

PS-1825

PS-1457

PS-293



PS-1822

PS-1447

PS-1826

PS-1824

PS-294

A

B

C

D

E

F

G

H

I

J

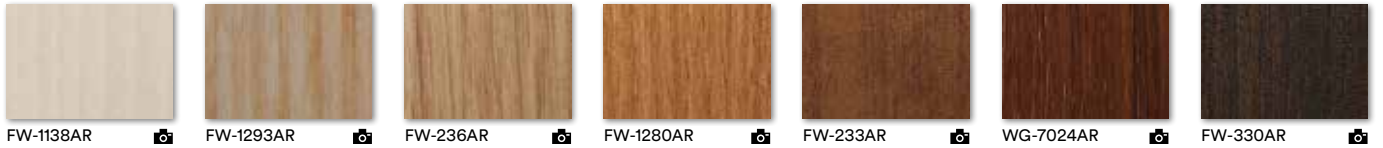
K

L

Abrasion Resistant

For high traffic applications

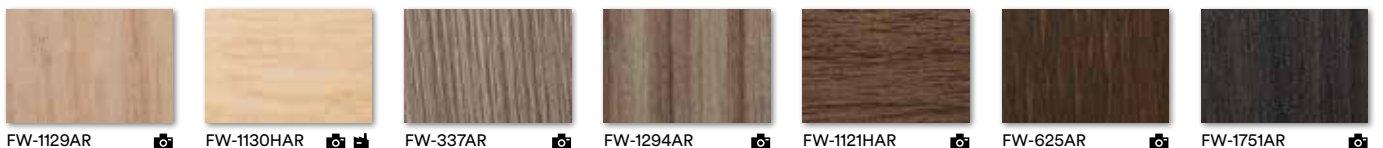
A



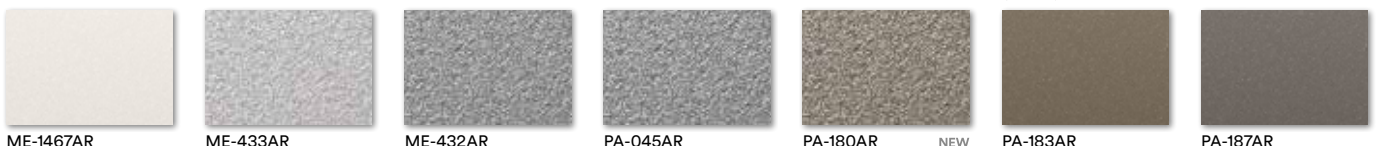
B



C



D



E



F



G



H



I



J



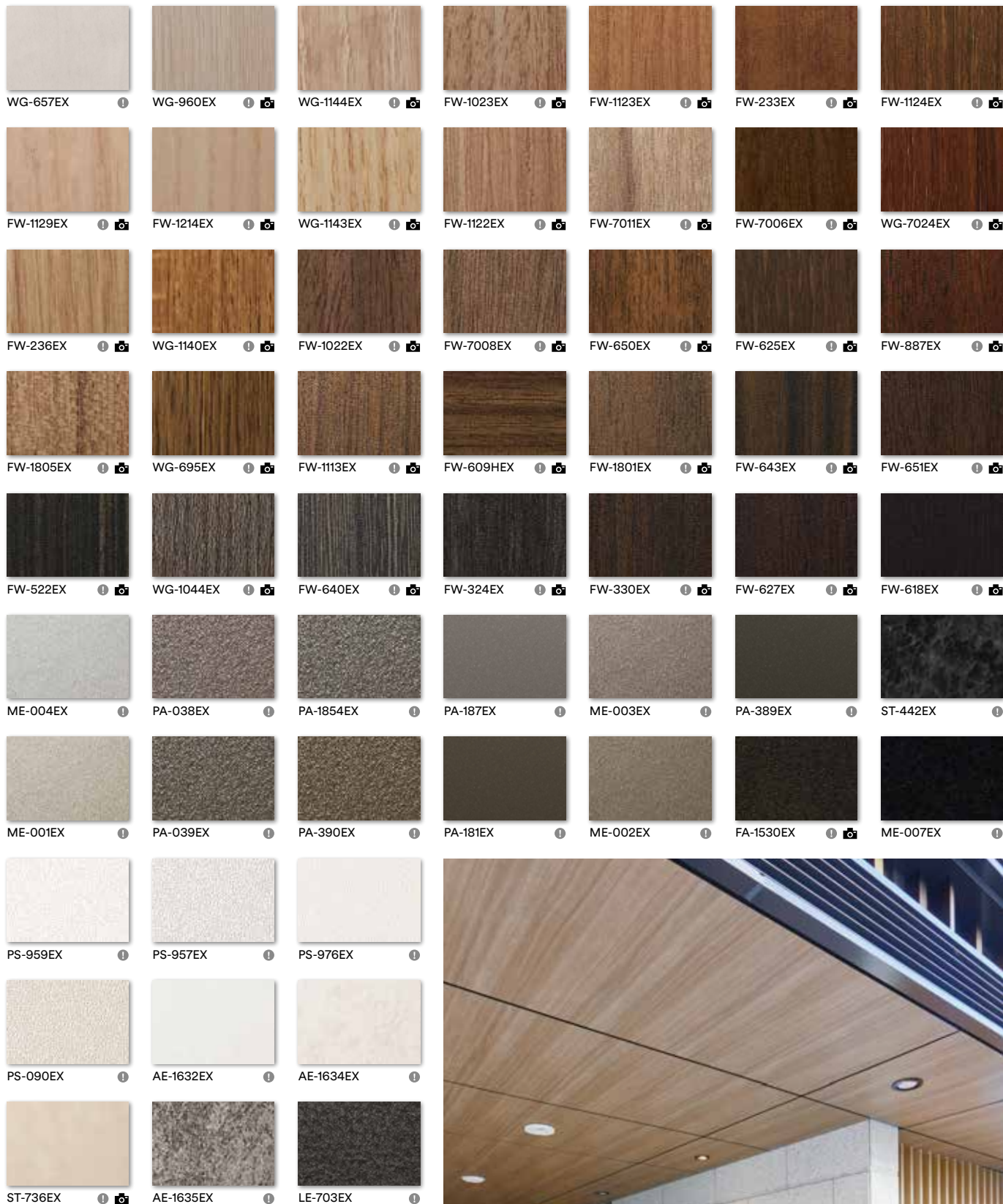
K



Can be used with chalk for blackboard application.

Exterior

For exterior applications



FW-1122EX

A

B

C

D

E

F

G

H

I

J

K

Ver.1

3M, Comply, DI-NOC and Sharpshooter are trademarks of 3M Company.
All other trademarks are property of their respective owners.
Please recycle. Printed in USA. © 3M 2023. All rights reserved.



UU012138457
7100289487
DIN-402-B





Conrad Seoul, Korea



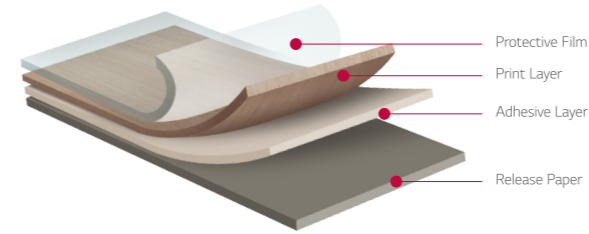
U Plus HQ, Korea

Interior Film
NW008
Amazahoue

Interior Film
NW006
Amazahoue

Specification

LG Hausys Interior Film is designed for flat lamination and profile wrapping. With its special self-adhesive treatment, interior film is easy to apply not only on flat surface but also on irregular surface, saving time and cost.



Essential Elements of Interior Film



Reliable Quality
Very stable even when exposed to heat, humidity or low temperatures



Fire Resistance
Fire Resistance Certification
England, Europe, China, Japan, America



Build Ability
Fire Resistance Certification
England, Europe, China, Japan, America



Eco Friendly
LG Hausys uses Heavy Metal free and 100% phthalate free plasticizers

Fire Resistance Certification



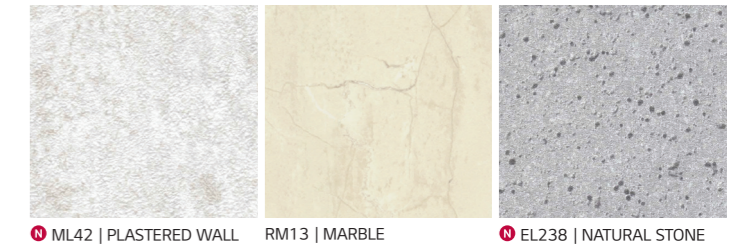
INTERIOR FILM

Index

Fabric



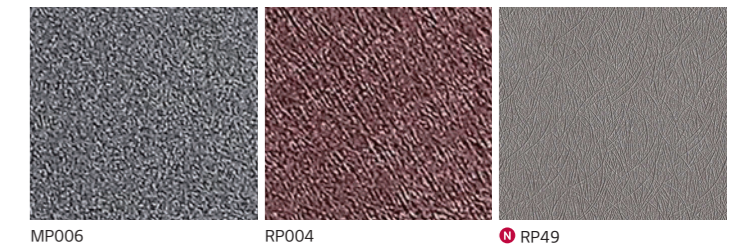
Stone



Wood



Metal





Conrad Seoul, Korea

Interior Film
CW46
Cherry

* Color may vary slightly from the actual product.



Headquarters LG Hausys.Ltd

One IFC 10 Gookjegeumyoong-Ro, Yeongdeungpo-Gu, Seoul 150-876, Korea E-mail : lginfo@lghausys.com

Sales Subsidiary

U.S.A (Atlanta)

LG Hausys Ameria, Inc.
900 Circle 75 Parkway, Suite1500,
Atlanta, GA 30339
TEL : 1-678-486-8244

CHINA (Shanghai)

LG Hausys Trading Co., Ltd. 19F Magnolia
Plaza No.777 Hongqiao Road, Xuhui
District, Shanghai, China 200030
TEL : 86-21-5241-6600

EUROPE (Frankfurt)

LG Hausys Europe GmbH Lyoner str 15,
Atricom C8,
D-60528 Frankfurt/m, Germany
TEL : 0049-69-583029-0

RUSSIA (Moscow)

LG Hausys Rus, LLC.
Lesnaya Plaza 8th floor, 4, 4th Lesnoy
pereulok, Moscow, 125047, Russia
TEL : 7-495-663-39-58

INDIA (Gurgaon)

LG Hausys India Pvt. Ltd. Delta Tower, 6th
Floor, Plot No. 54, Sector 44 Gurgaon -
122001, Haryana, India
TEL : 91-124-4212590

CANADA (Toronto)

LG Hausys Canada, Inc. 423 Four Valley
Dr.Concord, ON L4K 5Z3, Canada
TEL : 1-905-660-4746

Production Subsidiary

U.S.A (Adairville)

LG Hausys America, Inc. 310 LG Drive,
Adairville, GA 30103
TEL : 1-706-879-3200

CHINA (Tianjin)

LG Hausys Tianjin Co., Ltd. 12, Quanfa
Road, Wuqing DEV Area, TianJin Hitech
Industry Zone, TianJin, China
TEL : 86-22-8212-5558

CHINA (Wuxi)

LG Hausys (Wuxi) Co., Ltd. NO.2 Hong
Xiang Road,
Wuxi New District, Jiangsu P.R. China
214145
TEL : 86-510-6668-6888

Overseas Branch

TURKEY (Istanbul)

Kempinski Residences Astoria Bü y kdere
Cad. No:127
A Kule Kat:7 PK.
34394 Esentepe i li / STANBÜL, Turkey
TEL : 90-212-285-1101

U.A.E (Dubai)

LG Hausys, Ltd. Dubai Office Dubai
Internet City Buiilding @3, Dubai, United
Arab Emirates
TEL : 971-4-553-1452

VIETNAM (Ho Chi Minh)

LG Hausys, Ltd.
L9-04,9 Flr,Vincom Center Dong Khoi,72
Le Thanh Ton Str,
Buen Nghe Wrd, Dist 1, HCMC
TEL : 84-28-3915-8909/10

INDONESIA (Jakarta)

LG Hausys, Ltd. Jakarta Office Tower One
at The City Center (TCC) Biatavia 18th
Floor, Unit 2Bj KH. Mas. Mansyur Kav.
126 Kel. Karet Tengsin, Kec. Tanah Abang
Jakarta Pusat-10220
TEL : 62-21-2967-5043

JAPAN (Tokyo)

LG Hausys, Ltd. Tokyo Office Kyobashi
Trust-Tower 14F,
2-1-3 Kyobashi, Chuo-ku, Tokyo, 104-
0031, Japan
TEL : 81-3-5299-4533

Find out more information,
Please visit at

www.lghausys.com



LG Hausys www.lghausys.com

INTERIOR FILM

Interior Material



U Plus HQ, Korea

Interior Film
NW057 Oak
NW067 Teak
NW008 Amazahoue